

**R4C**

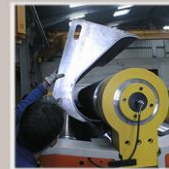
**4 ROLLS  
ROLL BENDING MACHINE**

Capacity : 8-50mm – Length : 1-4 m



**Advantages**

- ✓ 100% Hydraulic
- ✓ 4 Rolls driven
- ✓ Synchronised rolls
- ✓ Pinch roll swivels out
- ✓ Pinch roll pressure adjustable
- ✓ Perfect prebended edges
- ✓ Minimal flat portion of edges
- ✓ No pit
- ✓ Adapted to big thickness



All the technical information for our R4C product can be found in our web site by scanning this flash code.

Look at the photo gallery or watch the video ...



**STANDARD EQUIPMENTS**

- ✓ 4 rolls driven by independent hydraulic motors
  - ✓ Digital displays for controlling the position of prebending rolls
  - ✓ Tilting device for prebending rolls
  - ✓ Automatic and hydraulic synchronization of roll's parallelism
  - ✓ Progressives movements or proportional regulation with Danfoss ® motors and distributors
  - ✓ Manual centralized lubrication
  - ✓ Polished rolls
  - ✓ 4 grooves at 90° on each lower roll (easy positioning of metal sheets)
- Hydraulic control of opening yoke

4 Rolls	Bending length (mm)	Top roll Diameter (D) (mm)	* Maximum Thickness (mm)				Motor power Kw	
			1,3 x D		5 x D			
			Bending	Prebending	Bending	Prebending		
R4C 205-10	1 100	205	12	10	14	11	5,5	
R4C 235-10		235	14	12	16	14	7,5	
R4C 205-15	1 600	205	10	8	12	9	5,5	
R4C 235-15		235	12	10	14	12	7,5	
R4C 205-20	2 100	205	8	6	10	8	5,5	
R4C 235-20		235	10	8	12	10	7,5	
R4C 265-20		265	12	10	14	12	11	
R4C 285-20		285	14	12	16	14	15	
R4C 350-20		350	24	20	26	22	22	
R4C 400-20		400	30	25	33	28	30	
R4C 450-20		450	35	30	37	32	37	
R4C 460-20		460	37	32	39	34	45	
R4C 205-25		2 600	205	7	5	9	7	5,5
R4C 235-25			235	9	7	11	10	7,5
R4C 265-25	265		11	9	13	11	11	
R4C 285-25	285		13	11	15	13	15	
R4C 350-25	350		22	18	24	20	22	
R4C 400-25	400		27	22	30	26	30	
R4C 450-25	450		32	27	35	30	37	
R4C 460-25	460		34	29	37	32	45	
R4C 205-30	3 100		205	6	4	8	6	5,5
R4C 235-30			235	8	6	10	8	7,5
R4C 265-30		265	10	8	12	10	11	
R4C 285-30		285	12	10	14	12	15	
R4C 350-30		350	20	15	22	18	22	
R4C 400-30		400	25	20	28	24	30	
R4C 450-30		450	30	25	33	28	37	
R4C 460-30		460	32	27	35	30	45	
R4C 205-40	4 100	205	3	2	4	3	5,5	
R4C 235-40		235	4	3	6	4	7,5	
RCS 265-40		265	6	4	8	6	11	
RCS 285-40		285	8	6	10	8	15	
RCS 350-40		350	14	10	15	12	22	
RCS 360-40		360	15	11	16	13	22	
R4C 400-40		400	18	14	20	16	30	
R4C 450-40		450	22	18	24	20	37	
R4C 460-40		460	24	20	26	22	45	

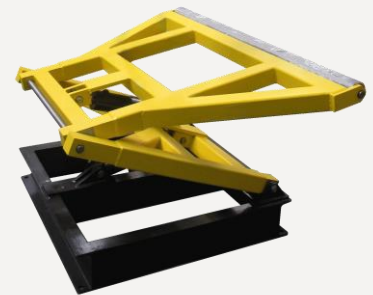
\* Technical capacities are given for Steel S 235 (Yield Strength 240 N/mm<sup>2</sup>)

## OPTIONS

- ✓ Hardened rolls
- ✓ Prebending rolls powered by two independent hydraulic motors
- ✓ Cone device (thrust) for conical bending
- ✓ Control desk with CN standard or Touch screen



- ✓ Place trackers



Your distributor